

CHROMA
TIFIC
CHROMATOGRAPHY
SCIENTIFIC

QUECHERS

TRUSTED METHOD SPECIALISTS



Next Level QuEChERS Kits

Manufactured in Germany

Quick Easy Cheap Effective Rugged Safe

Since its development and publication, QuEChERS has gained significant popularity as the method of choice for the analysis of multiple pesticide residues in agricultural products. CHROMAtific provides premium, high quality, worldwide-proofed kits.

We are your trusted supplier to address any concerns in detecting wide-ranging pesticides, herbicides, fungicides, antibiotics, and other compounds throughout the entire food supply.

We offer ready-to-use premium extraction kits and high quality dispersive QuEChERS mixtures, in a variety of adsorbents, salts, and tube configurations to suit your needs. We are always happy to work with you, providing standardised or customised products that fit your requirements 100%.

RECOMMENDED STANDARD OPERATING PROCEDURE

Weigh 10g /15g homogenized sample in a 50mL centrifuge tube

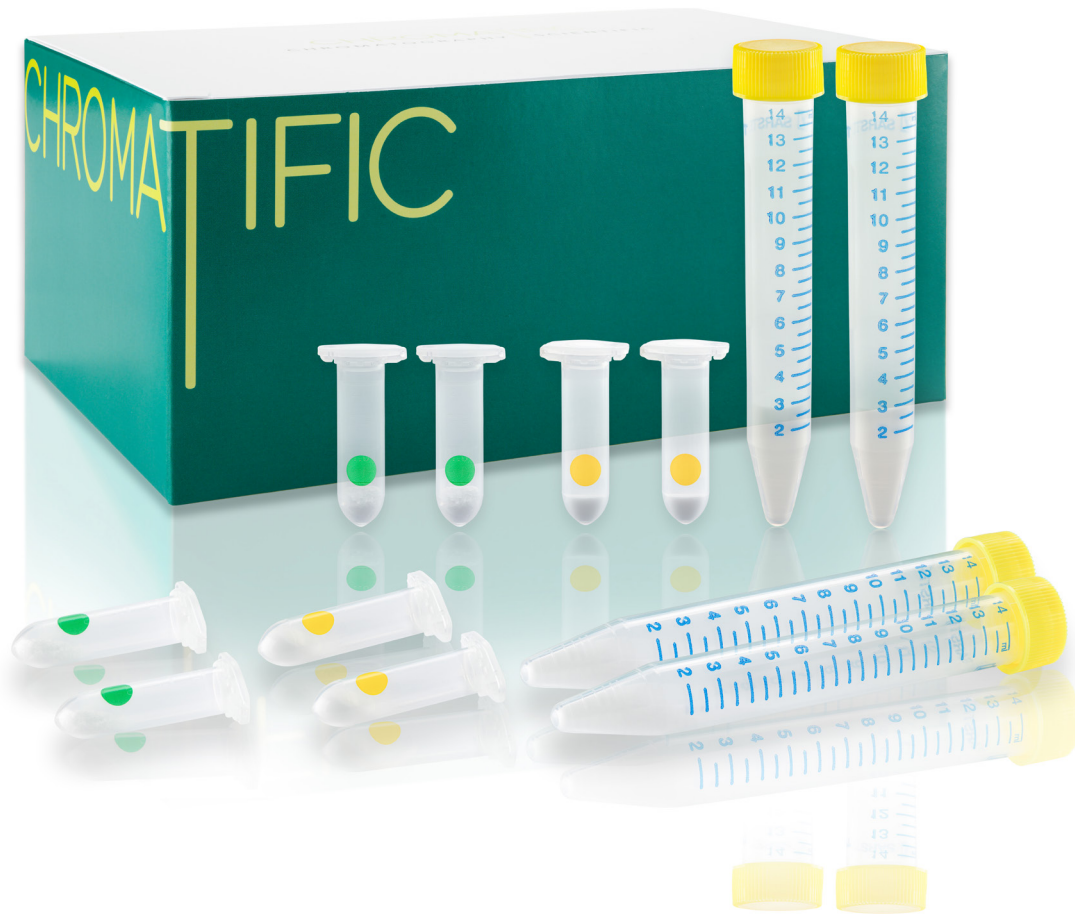
- Add 10mL / 15mL acetonitrile
- Add internal standard
- Shake vigorously

Add extraction salts according the method you follow

- Shake vigorously for one minute
- Centrifuge
- Remove aliquot from the upper acetonitrile phase

Add 1, 6 or 8mL aliquot to the selected dSPE kit.

AOAC 2007.1		EN 15662	
Samples with low fat content – 2 and 15mL kits	Samples with high fat/wax content – 2 and 15mL kits	Samples with low fat content – 2 and 15mL kits	Samples with high fat/wax content – 2 and 15mL kits
Pigmented samples (chlorophyll, carotenoids) 2 and 15mL kits	Pigmented samples (chlorophyll, carotenoids) with fats/waxes 2 and 15mL kits	Pigmented samples (chlorophyll, carotenoids) 2 and 15mL kits	Highly pigmented samples (chlorophyll, carotenoids) with fats/waxes 2 and 15mL kits
<div><div><div></div></div><div><ul style="list-style-type: none">• Shake vigorously for 30 sec• Centrifuge• Transfer the clear extract in an autosampler vial</div></div>			
GC-MS/MS or LC-MS/MS Analysis			





BENEFITS

- ✓ Guaranteed no leak caps and centrifuge tubes – stress-free shaking and working
- ✓ Easy opening and completely non-messy emptying of the extraction salt pouches
- ✓ Tested & certified
- ✓ Colour-coded dSPE kits which allow easy matching to their respective sample category
- ✓ Customized kits, tailored to your specific requests
- ✓ Analytical pure salts, sorbents, and tubes
- ✓ Available worldwide...delivered to your door...on time!
- ✓ Best price-performance ratio
- ✓ Unmatched, low-cost, premium-quality kits

We ensure the highest standard of quality with all our materials, exceeding the rigorous tests demanded of all German products.

Please feel free to find out more about us and our products today.



**We look forward to
collaborating with you.**



QUECHERS EXTRACTION KITS

Step 1: Extraction

Choose the extraction salt kit based on your method of analysis, AOAC, EN or Original. We are also an expert in producing customized kits, pre-weighed with the salts and sorbents according to your requirements.

CHROMAtific offers the pre-weighed extraction salts not only in anhydrous packets, but also in transfer tubes or ready-to-use in 50mL centrifuge tubes. This allows you to choose the format that fits the best into your daily laboratory routine.

Please find the standard kits in the following table:

Method	Contents	Type	With 50mL Tubes, 50/pk	Without 50mL Tubes, 50/pk
AOAC 2007.01	6 g MgSO ₄ ; 1.5 g NaAcetate	preweighed in anhydrous packets preweighed in transfer tubes preweighed in 50mL tubes	ACKI-MP50 ACKI ACKI-50	ACKI-MP ACKI-KB
EN 15662	4 g MgSO ₄ ; 1 g NaCl; 1 g NaCitrate; 0.5 g disodium citrate sesquihydrate	preweighed in anhydrous packets preweighed in transfer tubes preweighed in 50mL tubes	ENKI-MP50 ENKI ENKI-50	ENKI-MP ENKI-KB
Original (10g samples)	4 g MgSO ₄ ; 1 g NaCl	preweighed in anhydrous packets preweighed in transfer tubes preweighed in 50mL tubes	OMKI-MP50 OMKI OMKI-50	OMKI-MP OMKI-KB
Original (10g samples)	6 g MgSO ₄ ; 1.5 g NaCl	preweighed in anhydrous packets preweighed in transfer tubes preweighed in 50mL tubes	2OMK-MP50 2OMK 2OMK-50	2OMK-MP 2OMK-KB
Acrylamides	4 g MgSO ₄ ; 0.5 g NaCl	preweighed in transfer tubes preweighed in 50mL tube	AAMI AAMI-50	AAMI-KB
Veterinary Drugs	4 g Na ₂ SO ₄ ; 1 g NaCl	preweighed in transfer tubes preweighed in 50mL tubes	VTDI VTDI-50	VTDI-KB

We welcome each and every inquiry about customized filling.



QUECHERS DISPERSIVE KITS

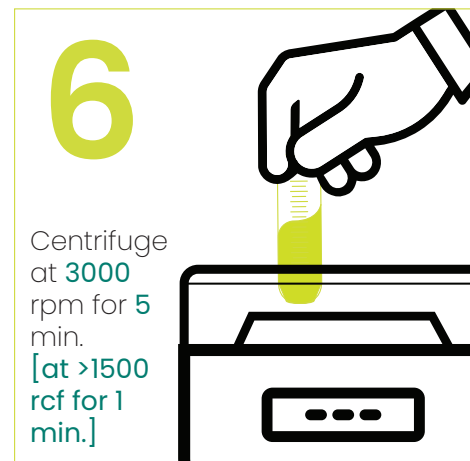
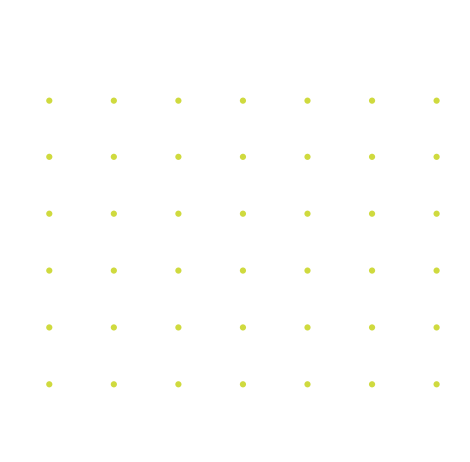
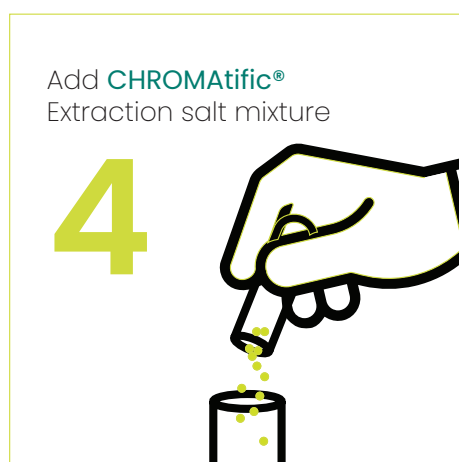
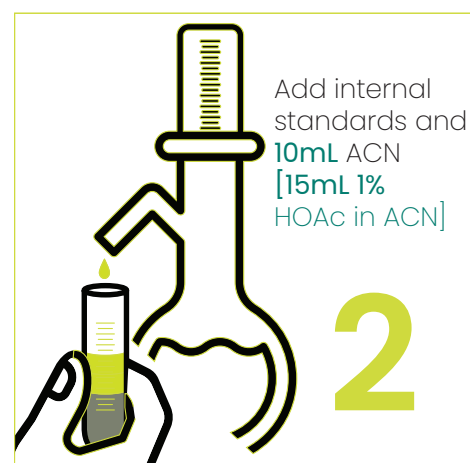
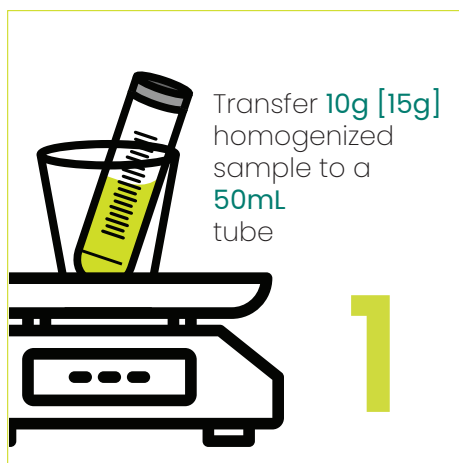
Step 2: dSPE Cleanup

In the dSPE Clean-up step, an aliquot of the sample extract from the extraction step is added to a dSPE Clean-tube (2mL, 5mL or 15 mL centrifuge tube) containing analytical pure sorbent and MgSO_4 . The chosen sorbent will remove disturbing matrix materials from the sample, while the MgSO_4 helps get rid of excess water and improve analyte partitioning. All kits are also available with ceramic homogenizers.

Method: EN 15662	MATRIX	Method: AOAC 2007.1
<p>General fruits & vegetables</p> <p>2mL, PSA-Mix-1EN 25 mg PSA, 150 mg MgSO4 100pcs/pk, p/n: PM1EN</p> <p>15mL, PSA-Mix-2EN 150 mg PSA, 900 mg MgSO4 50pcs/pk p/n: PM2EN</p>		<p>2mL, PSA-Mix-1AC 50 mg PSA, 150 mg MgSO4 100pcs/pk p/n: PM1AC</p> <p>15mL – 15mL, PSA-Mix-2AC 400 mg PSA, 1200 mg MgSO4 50pcs/pk p/n: PM2AC</p>
<p>Fatty samples</p> <p>2mL, PSA-Mix-3EN 25 mg PSA, 25 mg C18, 150 mg MgSO4 100pcs/pk p/n: PM3EN</p> <p>15mL, PSA-Mix-4EN 150 mg PSA, 150 mg C18, 900 mg MgSO4 50pcs/pk p/n: PM4EN</p>		<p>2mL, PSA-Mix-3AC 50 mg PSA, 50 mg C18, 150 mg MgSO4 100pcs/pk p/n: PM3AC</p> <p>15mL, PSA-Mix-4AC 400 mg PSA, 400 mg C18, 1200mg MgSO4 50pcs/pk p/n: PM4AC</p>
<p>Pigmented fruits & vegetables</p> <p>2mL, PSA-Mix-5EN 25 mg PSA, 2.5 mg GCB, 150 mg MgSO4 100pcs/pk p/n: PM5EN</p> <p>15mL, PSA-Mix-6EN 150 mg PSA, 15 mg GCB, 900 mg MgSO4 50pcs/pk p/n: PM6EN</p>		<p>2mL, PSA-Mix-5AC 50 mg PSA, 50 mg GCB, 150 mg MgSO4 100pcs/pk p/n: PM5AC</p> <p>15mL, PSA-Mix-6AC 400 mg PSA, 400 mg GCB, 1200 mg MgSO4 50pcs/pk p/n: PM6AC</p>
<p>Highly pigmented fruits & vegetables</p> <p>2mL, PSA-Mix-7EN 25 mg PSA, 7.5 mg GCB, 150 mg MgSO4 100pcs/pk p/n: PM7EN</p> <p>15mL, PSA-Mix-8EN 150 mg PSA, 45 mg GCB, 900 mg MgSO4 50pcs/pk p/n: PM8EN</p>		<p>fruits & vegetables with pigments & fats</p> <p>2mL, PSA-Mix-7AC 50mg PSA, 50mg GCB, 50mgC18, 150mg MgSO4 100pcs/PK p/n: PM7AC</p> <p>15mL, PSA-Mix-8AC 400 mg PSA, 400 mg GCB, 400 mg C18, 1200 mg MgSO4 50pcs/pk p/n: PM8AC</p>

ILLUSTRATED QuEChERS METHOD

STEP 1: EXTRACTION

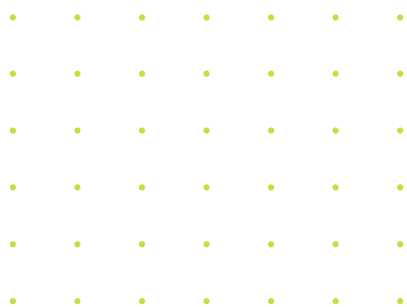
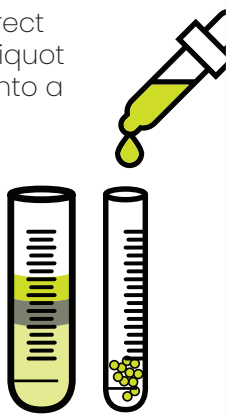


ILLUSTRATED QuEChERS METHOD

STEP 2: DISPERSIVE SPE CLEAN-UP

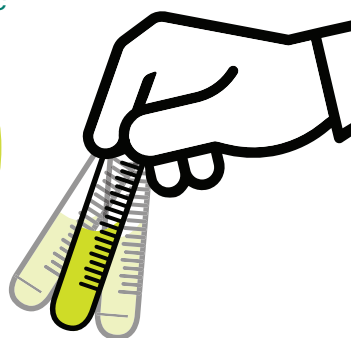
Transfer the correct amount of an aliquot of supernatant into a corresponding prefilled **CHROMatific®** dSPE centrifuge tube

8



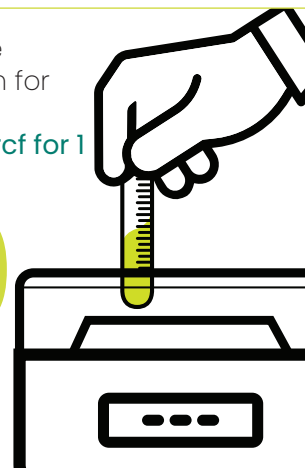
Shake vigorously for
30 sec

9



Centrifuge
>3000 rpm for
5 min.
[at >1500 rcf for 1
min.]

10



11

Transfer the clear extract in a vial and adjust the pH to 5 using 5% formic

acid in acetonitrile (approx. 10 $\mu\text{L/mL}$ extract).

[Preserve with toluene for GC/MS or 6.7mM formic acid for LC/MS/MS, Add TPP surrogate]



CHROMA TIFIC

CHROMATOGRAPHY
SCIENTIFIC

📍 **CHROMATIFIC UG**
CÄCILIEWEG 1
65321 HEIDENROD
GERMANY

☎ +49 (0) 6124 607 975 7
✉ INFO@CHROMATIFIC.DE
🌐 CHROMATIFIC.DE

